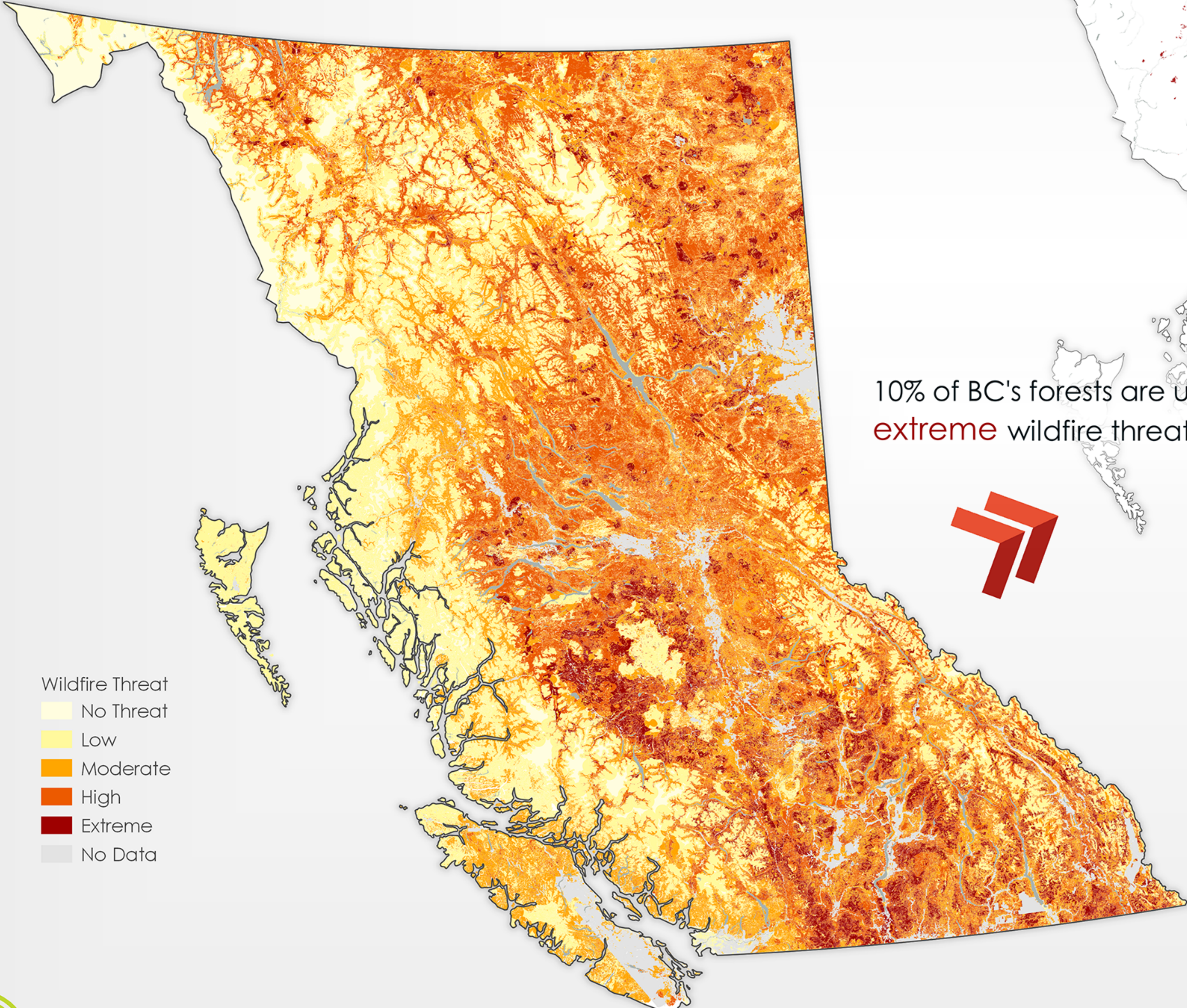


# WILDFIRE THREAT IN BRITISH COLUMBIA

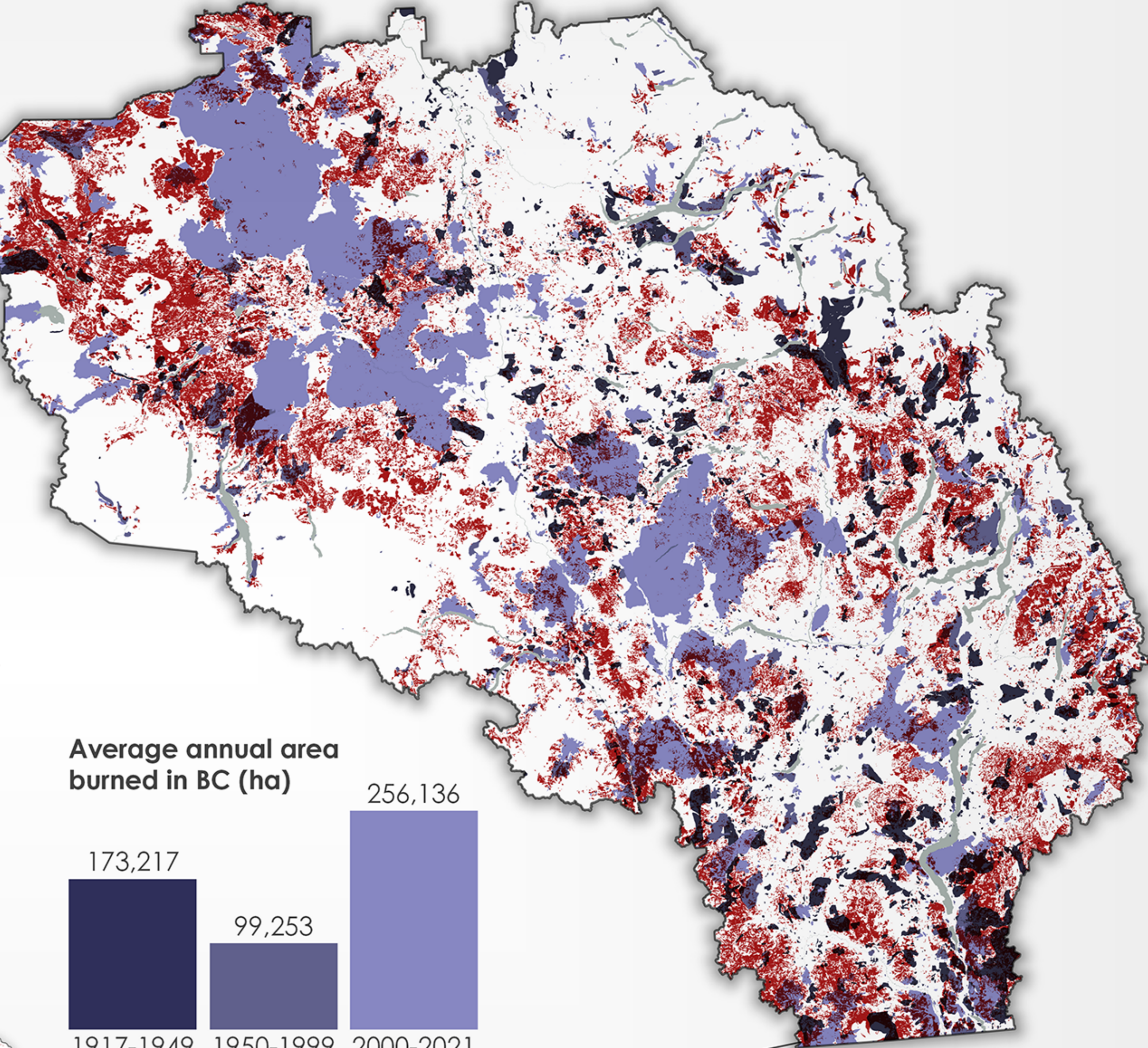
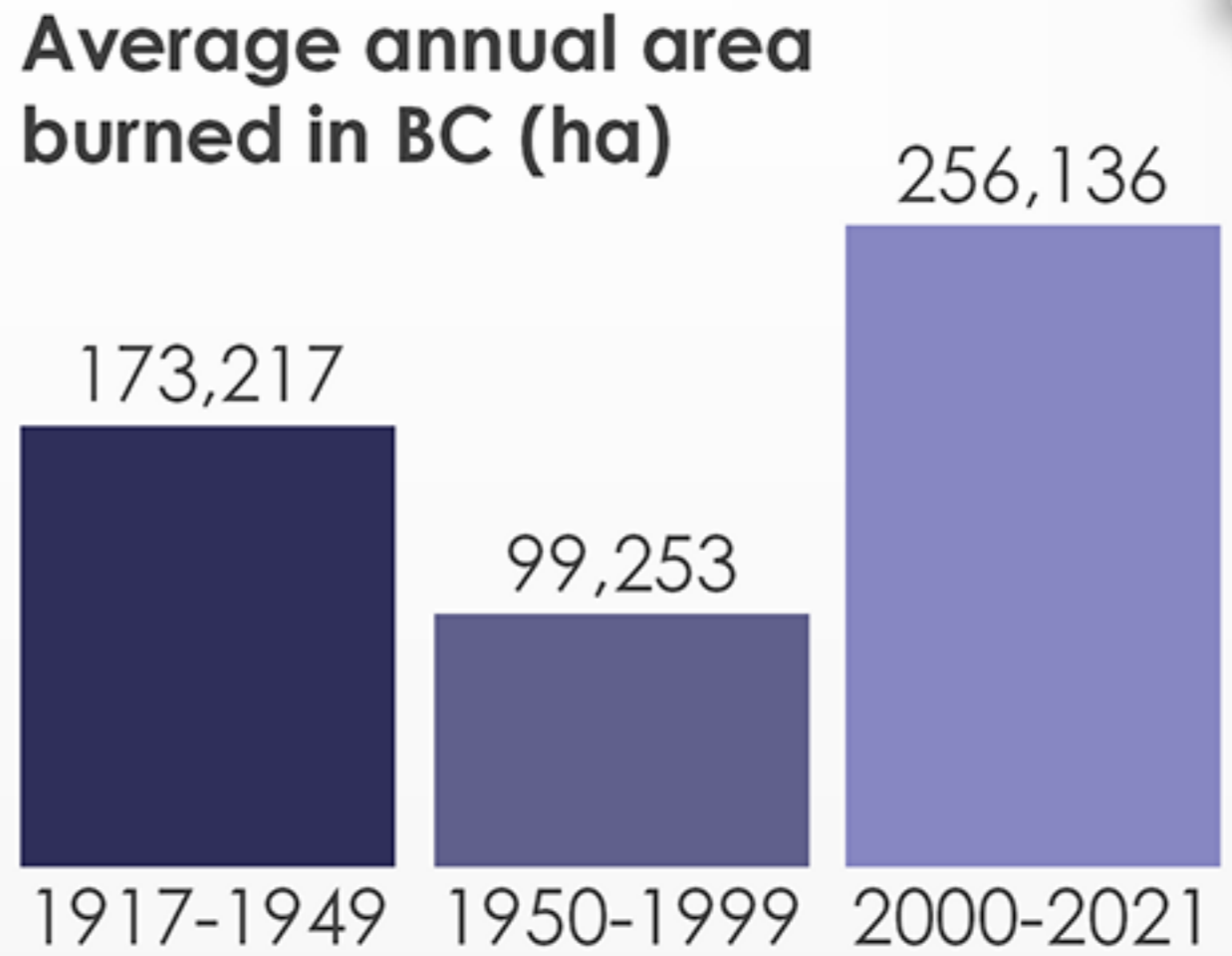
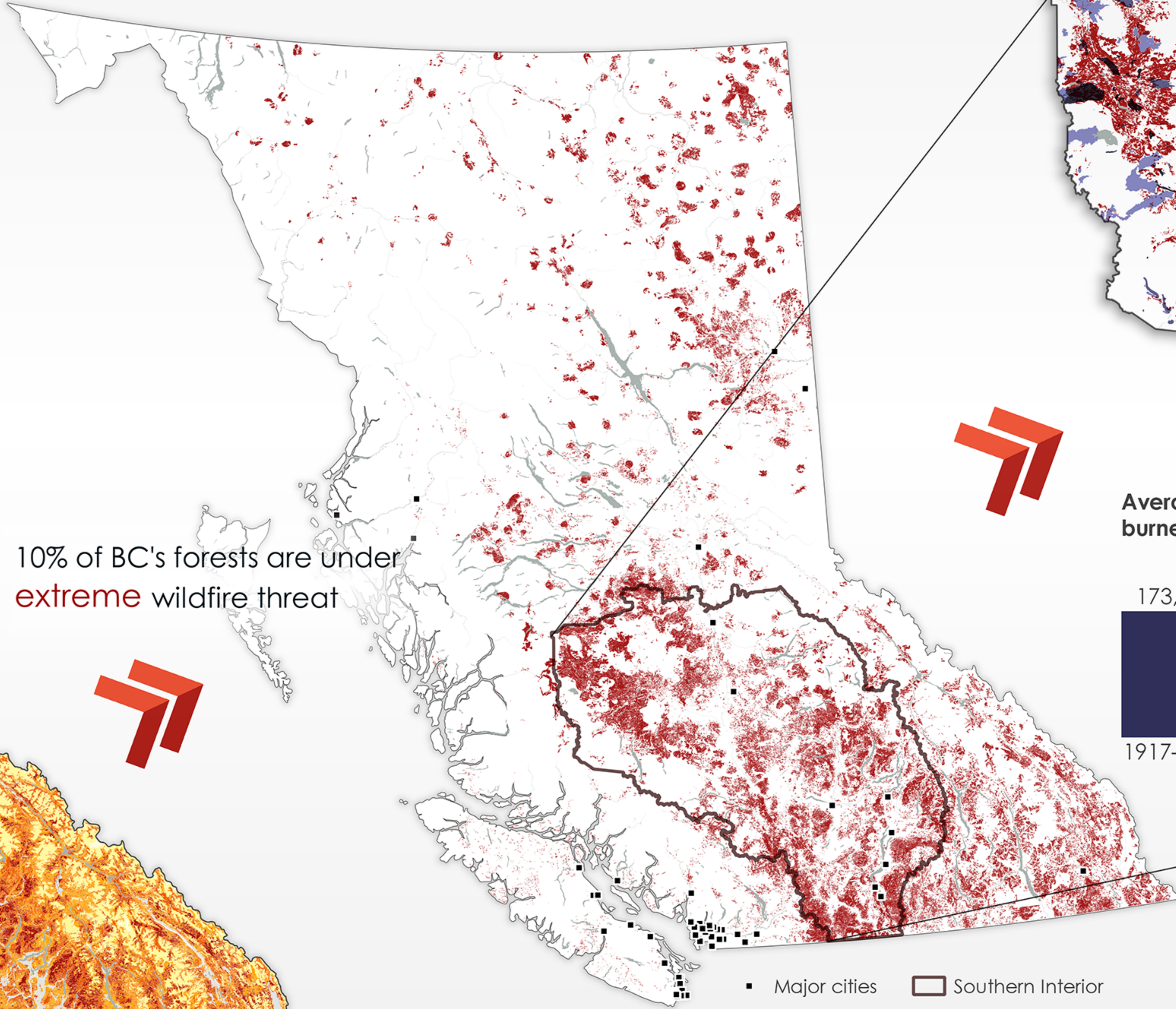
In the past five years we've had three of the worst fire seasons on record in BC, with such events expected to become more frequent and extreme due to climate change. As noted in a recent IPCC report<sup>1</sup>, climate change is increasing wildfire intensity, and BC's 2017 wildfire intensity was 11 times higher than natural events due to climate change. Wildfires are intensified by climate impacts like higher temperatures and droughts, and they also drive climate change by releasing huge quantities of greenhouse gases to the atmosphere.

<sup>1</sup> <https://www.ipcc.ch/report/ar6/wg2/>

The total extreme wildfire threat area is **2x greater** than the total forested area burned in 2017-2021.



10% of BC's forests are under extreme wildfire threat



Wildfire Threat  
 No Threat  
 Low  
 Moderate  
 High  
 Extreme  
 No Data

Major cities    Southern Interior

The Wildfire and Carbon project team are modelling the impact that different forest management interventions would have on reducing the wildfire risk, enhancing forest carbon sinks, and creating economic opportunities for the forest sector.

How we treat areas of extreme wildfire threat can affect future wildfires and help prevent worsening climate impacts.