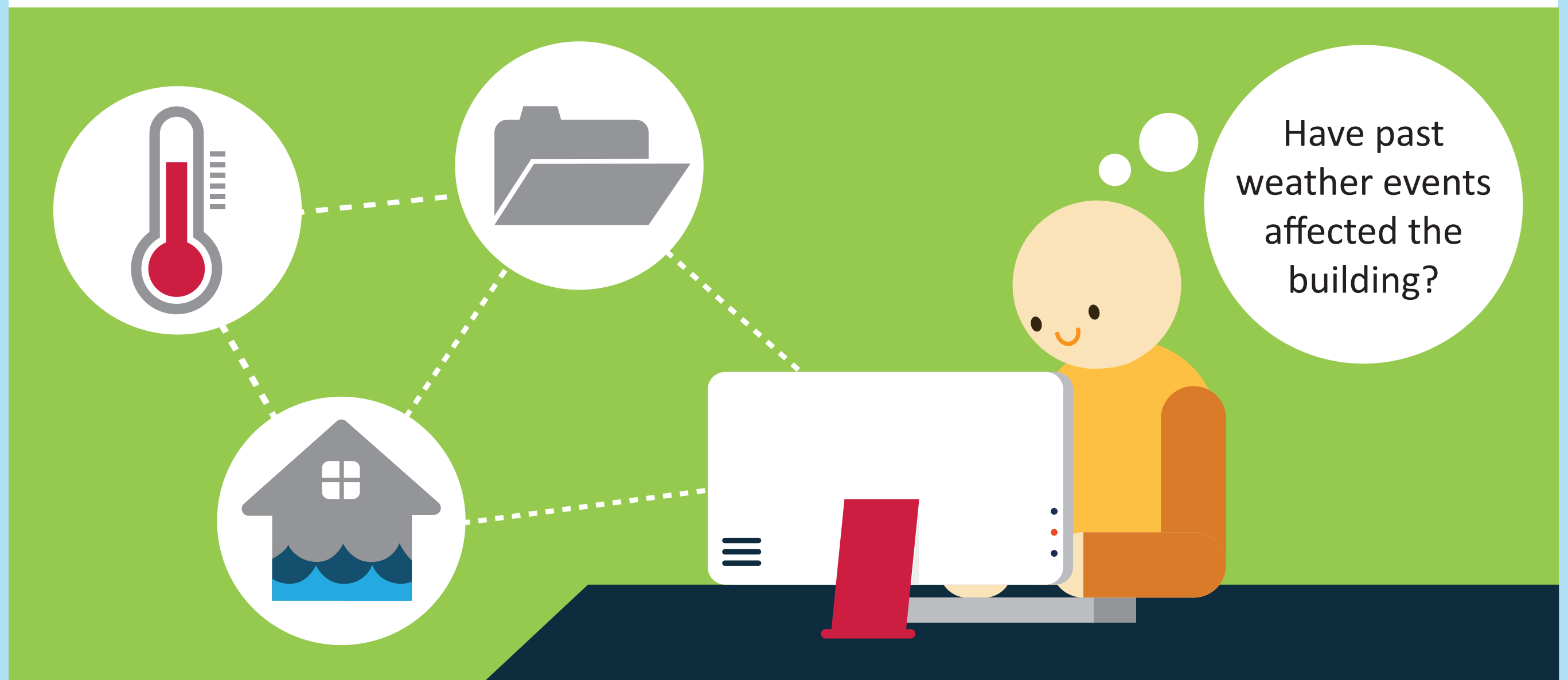


Making Your Building Resilient to Climate Change

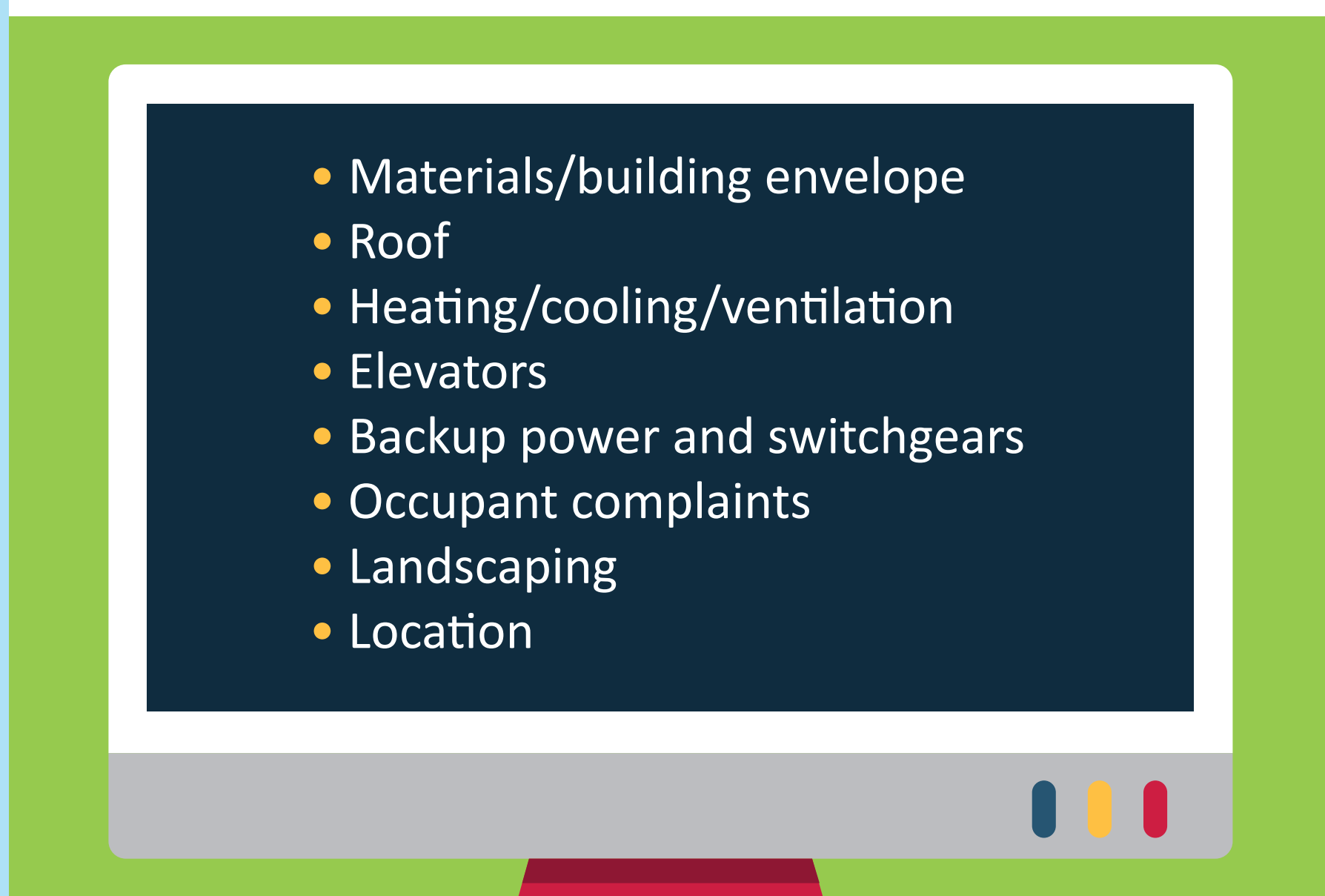
Wondering if your building is resilient to climate change?



Start by learning more about your building.



Review building records.



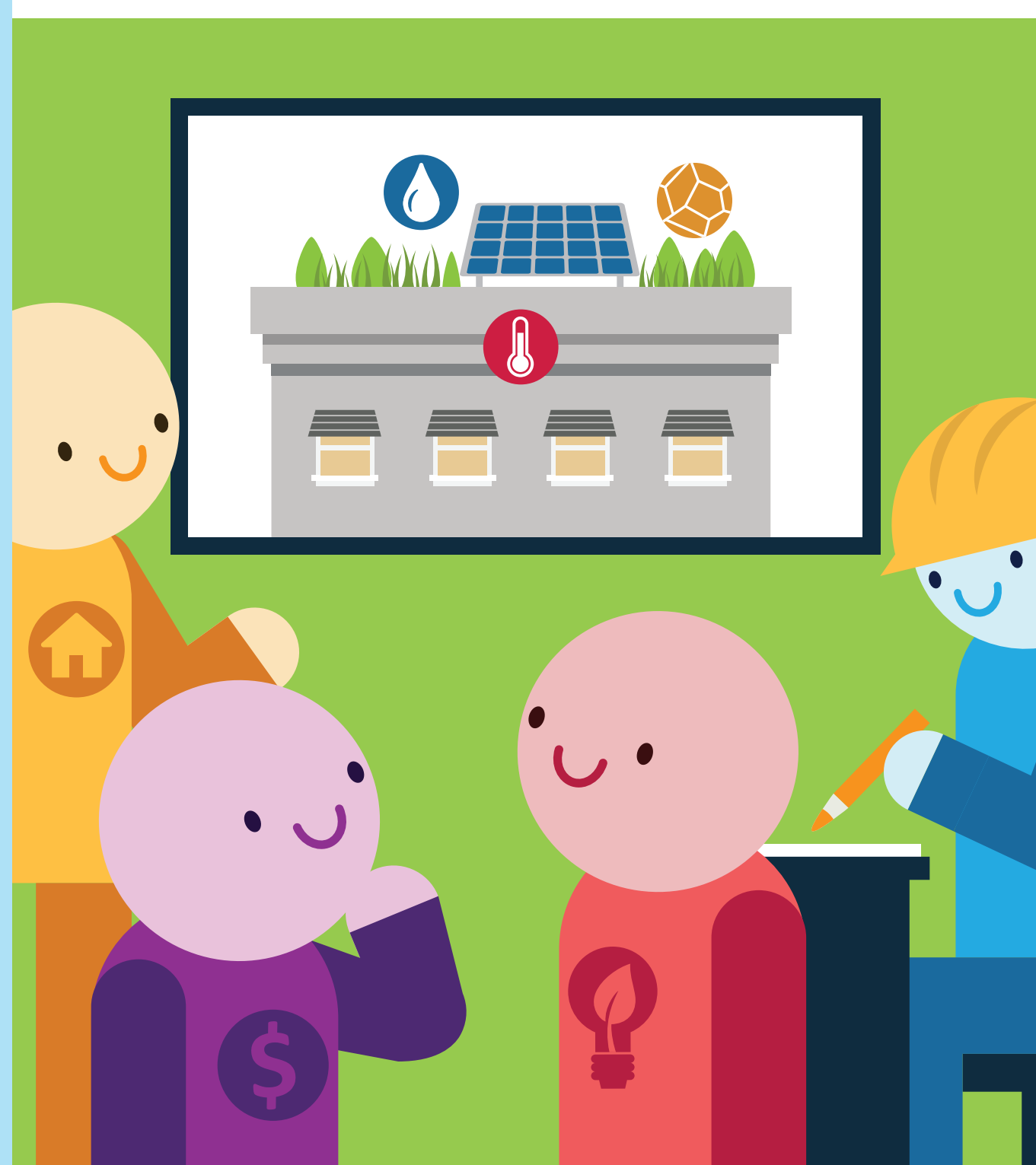
Assess expected regional climate impacts.



Find opportunities to respond.



Discuss measures to make building more resilient to climate risks.



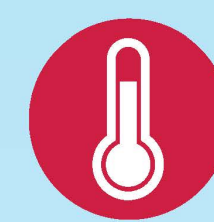
Incorporate in long-term plans and decision-making.



Pacific Institute
for Climate Solutions
Knowledge. Insight. Action.

Climate Risks to Buildings: Adaptation Options

Climate Risk and Adaptation Measures



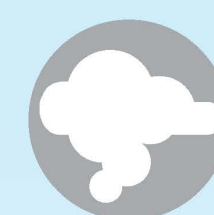
Extreme heat

- Install external shading
- Install a white or green roof
- Improve thermal insulation
- Provide air conditioning
- Install double/triple glazed windows
- Install operable windows



Drought

- Install water efficient appliances
- Install water metering
- Implement greywater recycling
- Install rainwater capture
- Use drought resistant landscaping



Air pollution

- Provide filtered air conditioning or ventilation
- Monitor concrete condition



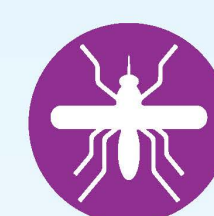
Wind intensity

- Assess trees for vulnerability
- Minimize overhanging structures
- Monitor roofs and cladding



Subsidence and heave

- Couple mature tree removals with drainage system installations
- Avoid planting trees close to buildings



Introduction of vector-borne diseases

- Install screens on windows and doors



Flooding: extreme precipitation, sea level rise, storm surge

- Monitor and maintain drainage
- Increase permeable outdoor surfaces
- Incorporate natural rainwater management and green roofs
- Protect backup power, mechanical, electrical, elevator mechanical rooms
- Raise site and site access to Flood Construction Levels or above



Pacific Institute
for Climate Solutions
Knowledge. Insight. Action.